

2020-2021 TMEA All State Etudes & Band Spring Audition Music

Bassoon

Concert Studies, Opus 26 Volume 1 by Milde/edited by Kovar

Wind Ensemble/TMEA Cut

Etude #1: No. 2

Page 4-5

Meno: quarter=52-60; Tempo 1: quarter=60-68

Beginning thru m. 12; cut to m. 25 and play to end

Etude #2: No. 17

Page 32-33

Quarter=58-66

Beginning to low G in m. 11; cut to fermata G in m. 34 and play thru first note of m. 43

Etude #3: No. 25

Page 48-49

Dotted half=50-64

Beginning thru m. 53; cut to 85 (rest on beat 1) and play to downbeat of m. 112

Symphonic Band Cut

Etude #1: No. 2

Page 4-5

Meno: quarter=52-60; Tempo 1: quarter=60-68

Beginning thru M. 12; cut to m. 25 and play to end of M. 29

Etude #2: No. 17

Page 32-33

Quarter=58-66

Beginning to low G in m. 11; cut to fermata G in m. 34 and play thru half note in M. 38

Etude #3: No. 25

Page 48-49

Dotted half=50-64

Beginning thru m. 53; cut to 85 (rest on beat 1) and play to downbeat of M. 89 (Tempo 1)

Concert Band Cut

Etude #1: No. 2

Page 4-5

Meno: quarter=52-60; Tempo 1: quarter=60-68

Beginning thru M. 12

Etude #2: No. 17

Page 32-33

Quarter=58-66

Beginning to low G in m. 11

Etude #3: No. 25

Page 48-49

Dotted half=50-64

Beginning thru m. 53

Spring Band Audition Information: All Travis High School Band students will audition for the Spring 2021 Concert Ensembles utilizing the TMEA All State Etudes. Each etude has been divided into 3 sections to allow for you to choose which portion of the etude you would like to prepare based on the ensemble you would like to audition for. For those students wishing to audition for Wind Ensemble, you will be required to prepare the entire TMEA All State cut. You are responsible for preparing the entire cut but only a portion will be selected for your audition. Auditions will occur in November and will be combined with weekly scale assignments that occur throughout the Fall Semester. Weekly playing assignments and recordings of your Audition Music will be due throughout the Fall Semester.

2.

Andante.

1 *p*

2

3

4

5

6

7

8

9 *Meno.*

10

11

12 *p*

mf

CUT TO
M. 25

CB

Te

f

p

f

25

26

f

28

p

p

30

32

34

36

p

f

5B

Detailed description: This is a page of musical notation, likely for a piano. The music is written in bass clef with a key signature of one sharp (F#). The first two measures (25 and 26) are almost entirely covered by large, dense black scribbles. Measure 25 begins with a piano (*p*) dynamic, and measure 26 ends with a forte (*f*) dynamic. From measure 27 onwards, the notation is clear. Measure 27 starts with a piano (*p*) dynamic. Measure 28 features a 5B bracket at the end. Measures 29-36 continue the melodic line with various dynamics, including piano (*p*) and forte (*f*), and are marked with slurs and accents. The piece concludes with a double bar line at the end of measure 36.

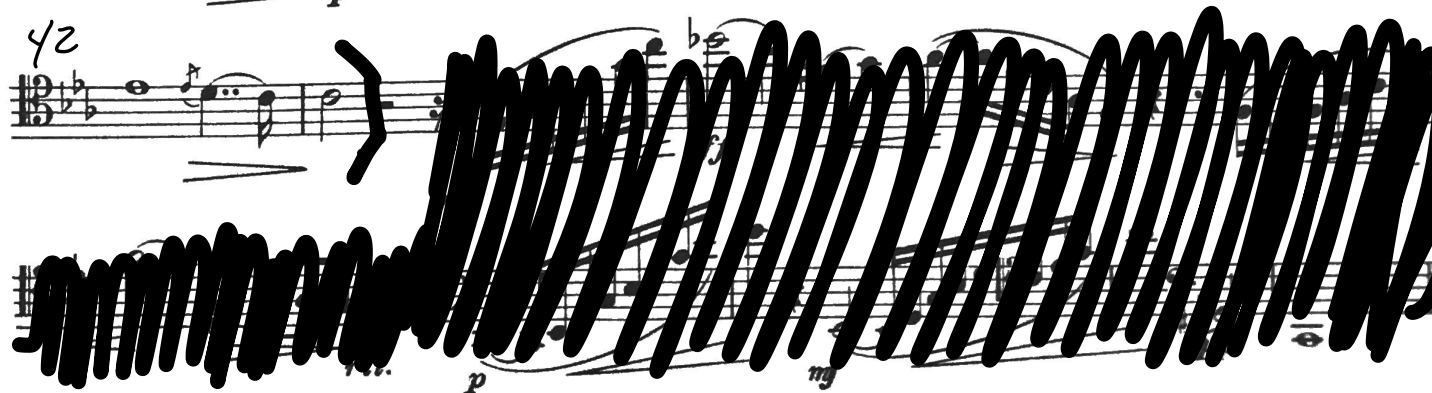
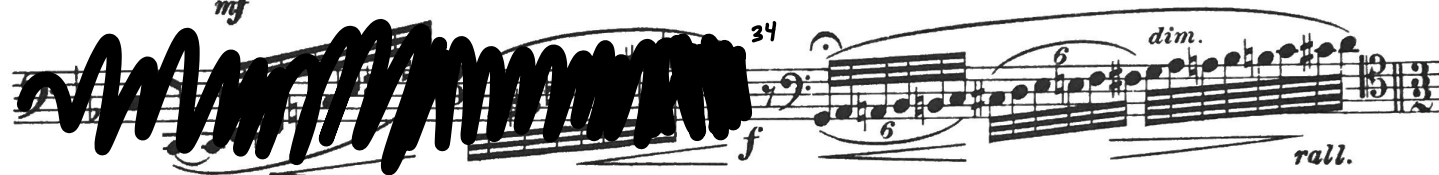
17.

Adagio.

Measures 1-9 of a musical score in 3/4 time, marked Adagio. The score is written for a single melodic line on a grand staff (treble and bass clefs). Measure 1 starts with a piano (*p*) dynamic. Measures 2-4 contain a triplet of eighth notes. Measure 5 is marked *a tempo*. Measure 6 is marked *f*. Measure 7 is marked *p*. Measure 8 is marked *f*. Measure 9 is marked *ff*. The score ends with a *rall.* (rallentando) marking and a *mf* (mezzo-forte) dynamic. There is a large blacked-out section at the end of the page, marked with a 'B' in a circle.

Measures 10-19 of the musical score, heavily obscured by large, dense blacked-out scribbles. The notation is mostly illegible, but some notes and dynamics like *f* (forte) are visible.

Measures 20-29 of the musical score, heavily obscured by large, dense blacked-out scribbles. The notation is mostly illegible, but some notes and dynamics like *mf* (mezzo-forte) are visible.



Presto.

13 *mf* *p*

6 *f* *mf*

12 *p* *f*

17 *mf*

25 *p*

30 *p*

36 *f* *p* *f*

42 *p* *f*

47 *tr.* *2.* *f* **CB**

54 *Meno*

